



Home Office

Emergency Services Mobile Communications Programme



Ambulance Leadership Forum
8th Feb 17



HM Government



CFOA
Chief Fire Officers
Association



ASSOCIATION OF
AMBULANCE
CHIEF EXECUTIVES

Emergency Services Network (ESN)

- Airwave:

- Is used by all Emergency Services and agencies and is a private network with c3,800 sites
- National Shutdown is 31 December 2019

- ESN:

- A new innovative voice and broadband data service based on enhancing a 4G LTE network with c19,000 sites
- Will deliver integrated critical voice and data with priority
- Is predominantly for police, fire and ambulance but will also benefit 300+ other organisations
- Will match Airwave's nationwide coverage
- Will improve public safety with enhanced functionality
- Will meet all user, system and commercial requirements but not necessarily in the same way as Airwave



Programme Scope

- Emergency Services Users:
 - 44 Police forces
 - 50 FRS
 - 13 Ambulance Trusts
- Other User Organisations:
 - non-Home Office police forces
 - other government departments
 - local authorities
 - Transport agencies and utility companies
- **Control rooms:** c200
- **Vehicles:** c50,000
- **Aircraft:** c115
- **Users:** c300,000



Programme governance

- The Home Office is the lead for all funding departments and devolved bodies:
 - Single contract holder
 - Simplify interaction with suppliers
 - Single bill payer for Core services
 - User billing for Non-core services
- Memorandum of Understanding between HO:
 - Department for Health, Scottish and Welsh Governments
 - Other ESN Users



Main procurement lots

- **Lot 1 (Delivery Partner) - KBR**

- A Delivery Partner to oversee build out of the network; programme manage transition; provide cross-Lot integration; training support services; vehicle installation design and assurance, and delivery support

- **Lot 2 (User Services) - Motorola**

- An service provider to provide end-to-end systems integration; public safety functionality; account management; network and IT infrastructure; technical interfaces to all other lots and services user device management; application hosting; customer support; and service management

- **Lot 3 (Mobile Services) - EE**

- A mobile network operator to provide an enhanced radio access service with highly available full national coverage using the Extended Area Services; and technical interface to Lot 2

Other procurements

- **Related projects:**

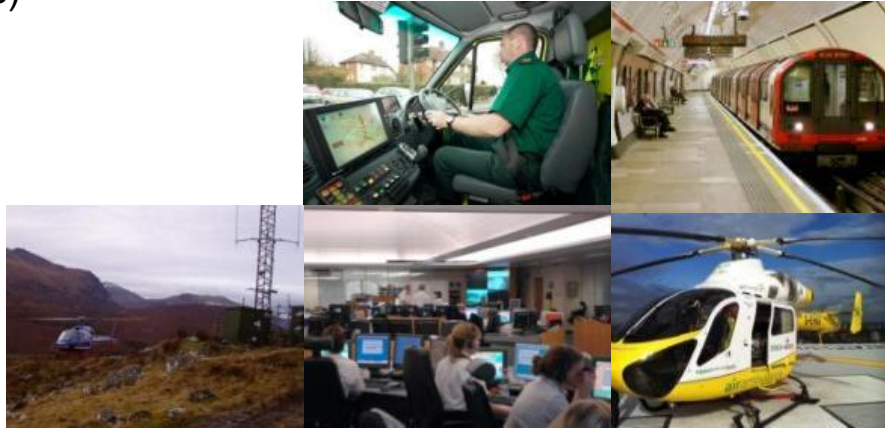
- EAS: Ground and A2G infrastructures, transmission, installations and FM
- Devices: Handheld, Vehicle, NSS and Aircraft (and their installations)
- Networks: Control Rooms (ICCS, Interworking and DNSP), LUS, Special Coverage

- **Related activities:**

- General coverage
- Special coverage
- Resilience
- Testing
- Security
- Trials

- **Dependent projects:**

- Crossrail
- MIP
- Network Rail (Telecoms)



Timetable

Milestone	Date
Contract award	Dec 15
MSI acquires Airwave	Dec 15
Detailed design	May 16
Test & Functional Trials	Aug 16 to Feb 18
Service Ready	Mar 18
Major Operational Trails	Feb 18 to Jun 18
Mobilisation Complete	Jun 18
Transition commencement target	Mid 18
Transition complete target	TBC

A close-up photograph of an ambulance's emergency light bar at night. The lights are flashing a bright blue color. The background is dark with out-of-focus bokeh lights in various colors (yellow, red, white, blue), suggesting a city street or a busy emergency scene.

AMBULANCE LEADERSHIP FORUM

EE AND ESN

8TH FEBRUARY 2017

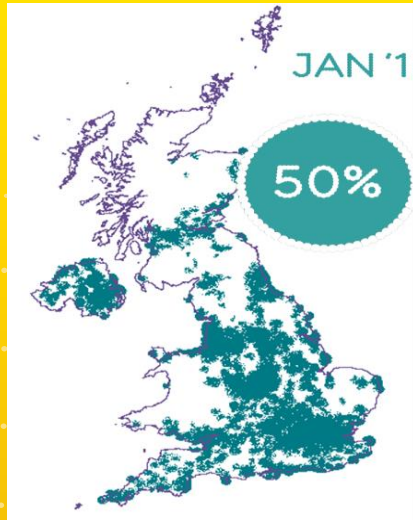
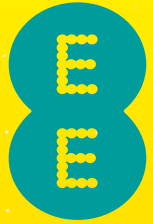


BUILT ON BRITAIN'S BEST 4G NETWORK

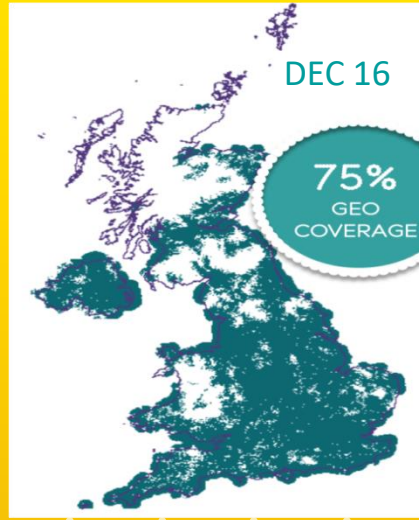
- Dedicated, ultra-reliable core network
- Superior voice and data capabilities
- Service prioritisation for ESN users
- Inherent resilience supported by network hardening and innovative solutions
- Enhanced indoor & rural coverage with new spectrum



96% GEOGRAPHIC 4G COVERAGE BY 2017



EE 4G outdoor coverage at start of contract



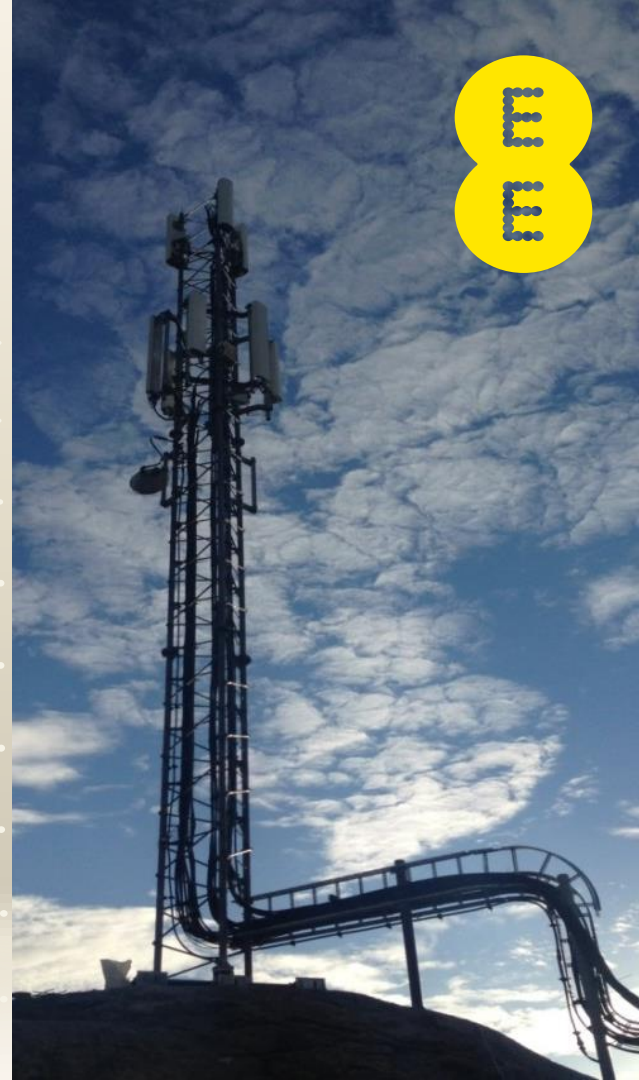
Commercial network switch on is occurring now



EE 4G ESN outdoor coverage Sep 17

EXTENDING OUR 4G COVERAGE

- Upgrading 18,500 sites to 4G
- c.430 new sites to reach remote regions of UK



DELIVERING ULTRA-RESILIENT NETWORK

- Network refresh to deliver enhanced reliability and monitoring
- Improved power resilience through additional generators and batteries
- Transmission resilience for 2000 sites
- Rapid Response Vehicles



SERVICE MANAGEMENT & OPERATIONAL READINESS



- Service Management Framework delivered
- Integrated Service Management Tool to be deployed
- Operations proof of concept underway
- User organisation collaboration
- Operational scenario planning



OUR ESN JOURNEY

DECEMBER 2015

We won the
ESN contract

FEBRUARY 2016

Initial plans and
designs shared
with the HO

MAY 2016

Detailed plans and
designs shared
with the HO

SEPTEMBER 2016

Reference
system built

OCTOBER 2016

Network testing
and integration

NOVEMBER 2016

System testing
complete



User Engagement

CONFERENCES



USER VISITS TO TOC



FRONT LINE EXPERIENCES



EE SITE VISITS



RRV TOUR



Transition Group	Completed	To Activate	% Complete
East	1,396	377	78.7%
East Midlands	1,102	304	78.4%
London	1,438	67	95.6%
North East	547	100	84.5%
North West	1,646	164	90.9%
Scotland	1,402	644	68.5%
South Central (inc Isle of Wight)	1,050	242	81.3%
South East	1,144	234	83.0%
South West (inc Isle of Scilly)	1,219	293	80.6%
Wales	682	248	73.3%
West Midlands	1,254	239	84.0%
Yorkshire	1,105	194	85.1%



INFORMING USERS

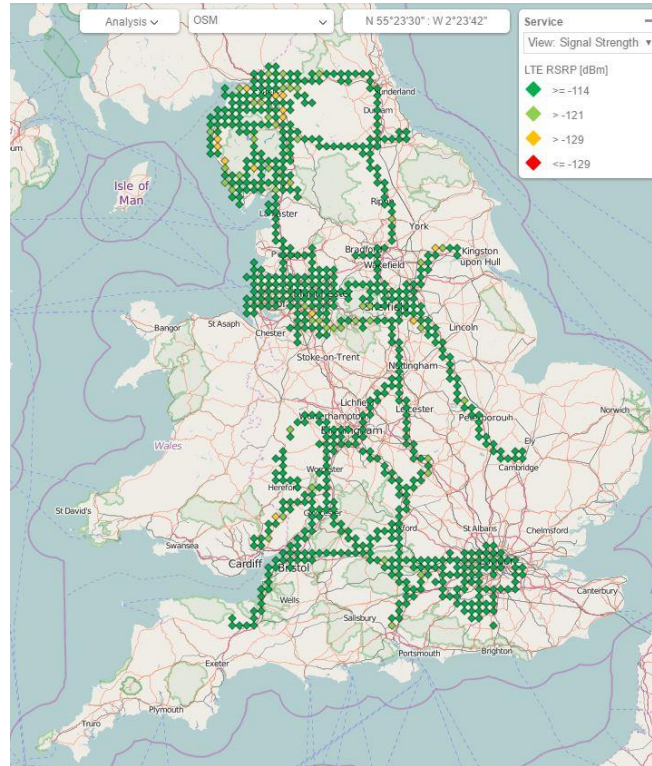
REGIONAL COVERAGE MEETINGS





THANK YOU

Coverage Assurance



HM Government

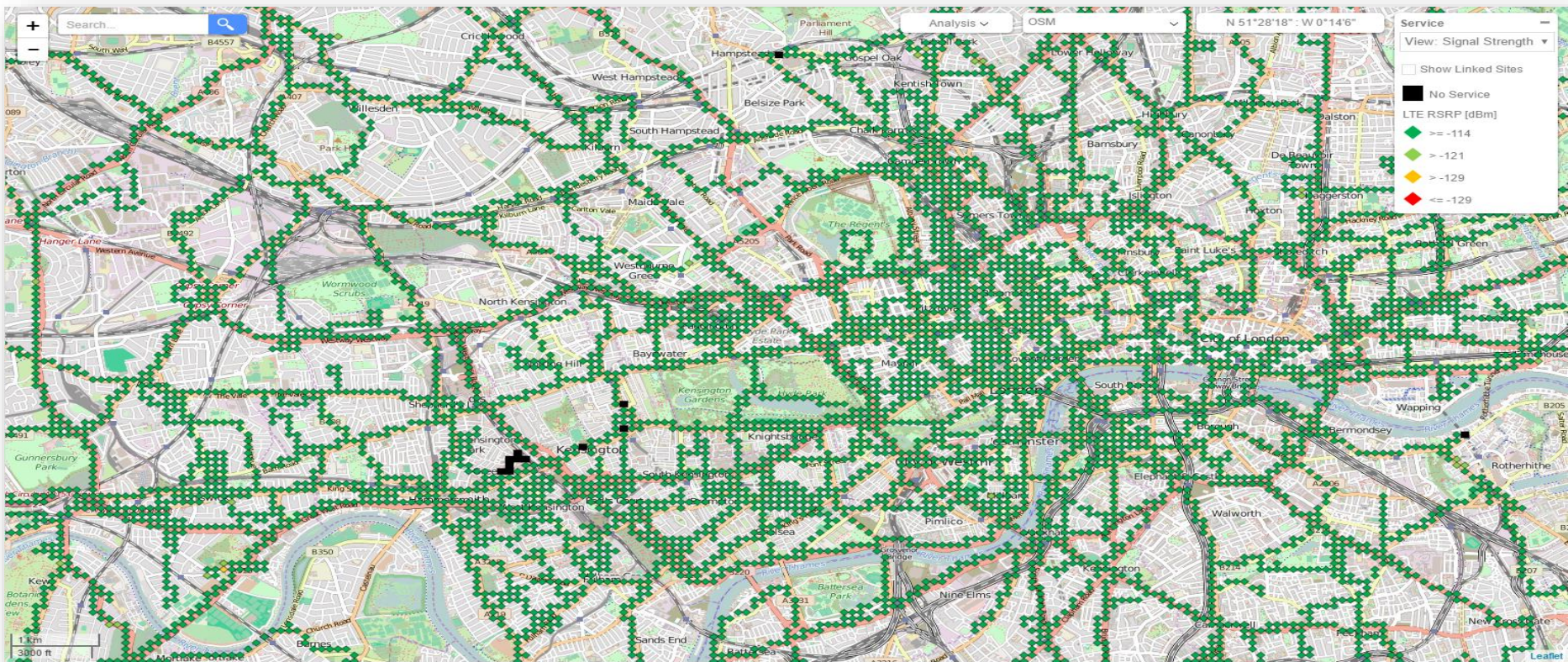


CFOA
Chief Fire Officers
Association



ASSOCIATION OF
AMBULANCE
CHIEF EXECUTIVES

Coverage Assurance



HM Government



CFOA
Chief Fire Officers
Association



ASSOCIATION OF
AMBULANCE
CHIEF EXECUTIVES

Coverage Assurance

