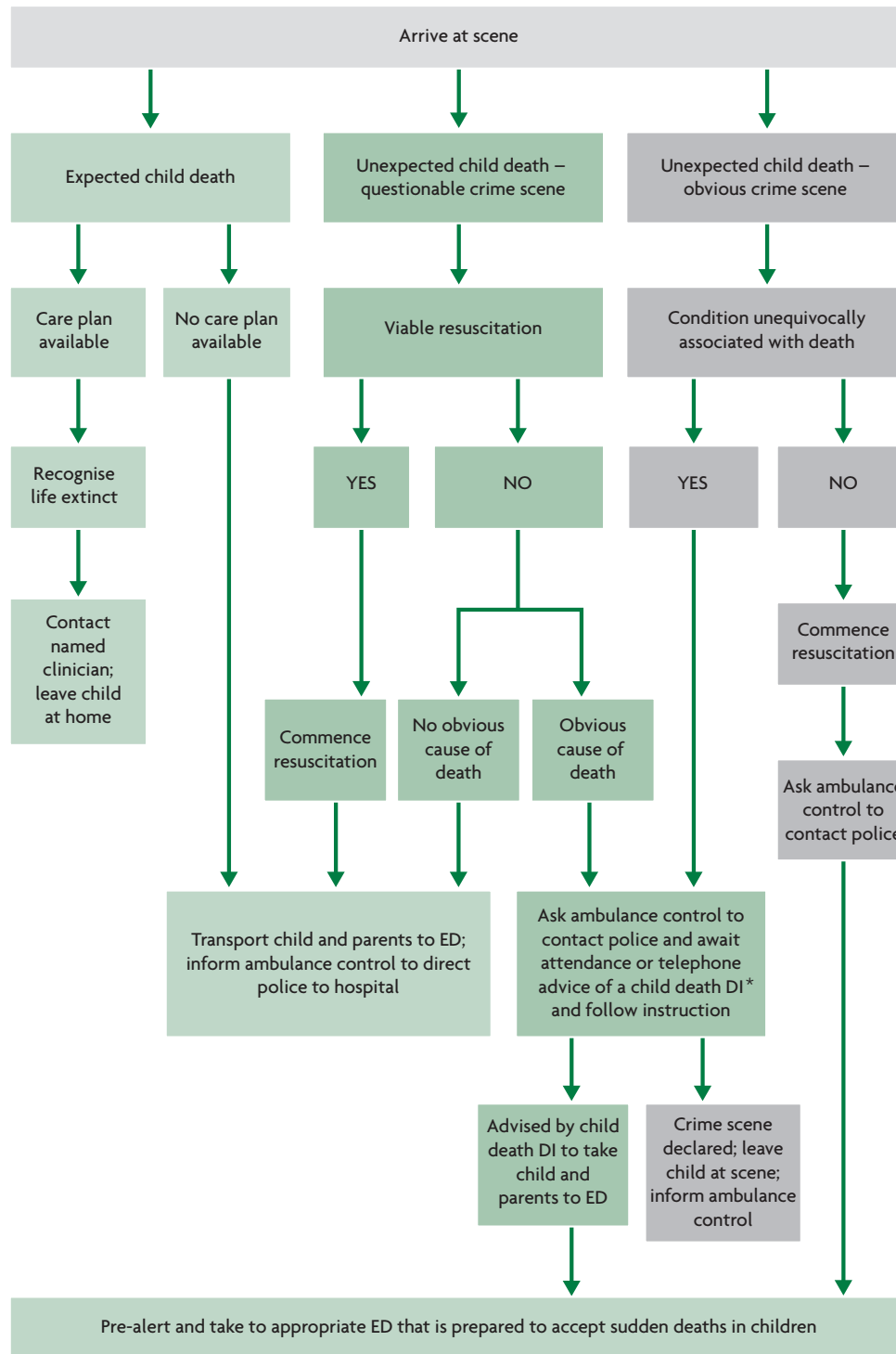


# Death of a Child, including Sudden Unexpected Death in Infancy, children and adolescents (SUDICA)



## Conditions unequivocally associated with death in children less than 18 years:

1. Massive cranial and cerebral destruction
2. Hemicorporectomy or similar massive injury
3. Decomposition/putrefaction
4. Incineration

NB The Royal College of Paediatrics and Child Health is starting a review of the whole SUDICA process and its advice will be passed on to all pre-hospital clinicians in due course. In the meantime the presence of rigor mortis and hypostasis should not preclude resuscitation in children unless there is other substantial evidence to suggest that they are clearly beyond help.

**\*Child Death Detective Inspector** – A Detective Inspector who is trained in the management of child death incidents to ensure the multi-agency investigation is commenced and evidence gathered to ascertain the full facts of the child's death.

**Figure 1.2** – Example of a local child death procedure from South Central Ambulance Service – reproduced with kind permission.