

JRCALC Clinical Guidelines 2020

A number of updates have been publishing on the JRCALC apps since late 2019.

NEW Acute Behavioural Disturbance

12th December 2019

New guideline

A new guideline on acute behavioural disturbance has been published.

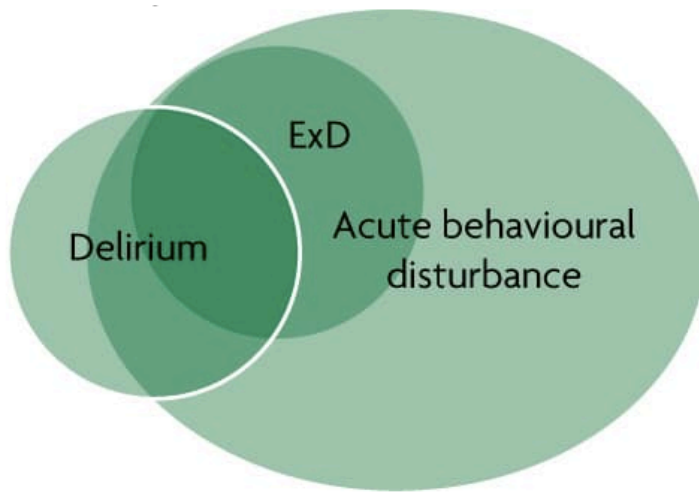


Figure 1 – Acute behavioural disturbance. Republished with kind permission of Professor Keith Rix. Available at: <https://napicu.org.uk/wp-content/uploads/2019/04/K-Rix-Acute-Behavioural-Disurbance-20-March-14.05-14.30.pdf>

Adrenaline 1 milligram in 10 ml (1 in 10,000)

29th September 2020

Cautions amended

The Cautions section has been amended in relation to cardiac arrest so as to be in line with the Hypothermia section in the Advanced Life Support guideline(s).

Altered Level of Consciousness

16th June 2020

Order of GCS

The order of the Glasgow Coma Scale has been corrected to Eyes, Verbal, Motor: EVM.

29th September 2020

Emergency and Alert Cards

Includes changes to **Medical Emergencies in Adults — Overview**, **Medical Emergencies in Children — Overview**.

A joint National Patient Safety Alert was issued by NHS Improvement and NHS England about Steroid Emergency Cards to support early recognition and treatment of adrenal crisis in adults. Small amendments have been made to highlight the need to be alert for a patient having an emergency card for a specific condition. For example, a steroid emergency card or an alert card for a patient with COPD regarding oxygen therapy.

Asthma in Adults and Children

6th February 2020

Wheeze in very young children

Includes changes to **Respiratory Illness in Children**, **Salbutamol**.

This clarification is added: Asthma is rare in very young children (under 1 year) and other causes of wheeze (such as bronchiolitis or viral-induced wheeze) should be considered. Salbutamol is not indicated in bronchiolitis. It will not benefit the condition and the resultant tachycardia may confuse subsequent clinical assessment in hospital.

Birth Imminent

28th November 2019

Amniotic membranes

An update to the guideline explains that the amniotic membranes should NOT be ruptured if they are visible during birth.

17th June 2020

***En caul* birth**

New photographs are added to illustrate assessment and management of an 'en caul' birth.

29th September 2020

Administration of misoprostol

The guidance regarding the administration of Misoprostol has been revised through and Figure 5.5 updated to reflect changes.

Burns and Scalds

6th February 2020

Irrigation time for chemical burns

Irrigation time for chemical burns is clarified as a minimum of 20 minutes.

Convulsions in Adults

29th September 2020

Focal motor seizures

Additional guidance regarding the treatment of focal motor seizures, along with new references to support this.

Dexamethasone

16th June 2020

New dosage range

Dosages have been revised and a new dosage range for children ages 7–11 years is added.

Glycaemic Emergencies in Adults and Children

6th February 2020

Discharge clarification

Table 3.51 has been clarified: patients can be considered for discharge if their blood sugar is greater than 4 mmols.

29th September 2020

Intravenous fluid therapy and diabetic ketoacidosis

Includes changes to **Intravascular Fluid Therapy in Adults** and **Intravascular Fluid Therapy in Children**.

Wording regarding the administration of fluids to patients with DKA has been revised, including removing the caution concerning children and young adults with DKA and the increased risk of cerebral oedema associated with IV fluid therapy. New references have been added to support these changes.

Headache

6th February 2020

Carbon monoxide poisoning

A tension-type headache is the most common symptom of mild carbon monoxide poisoning.

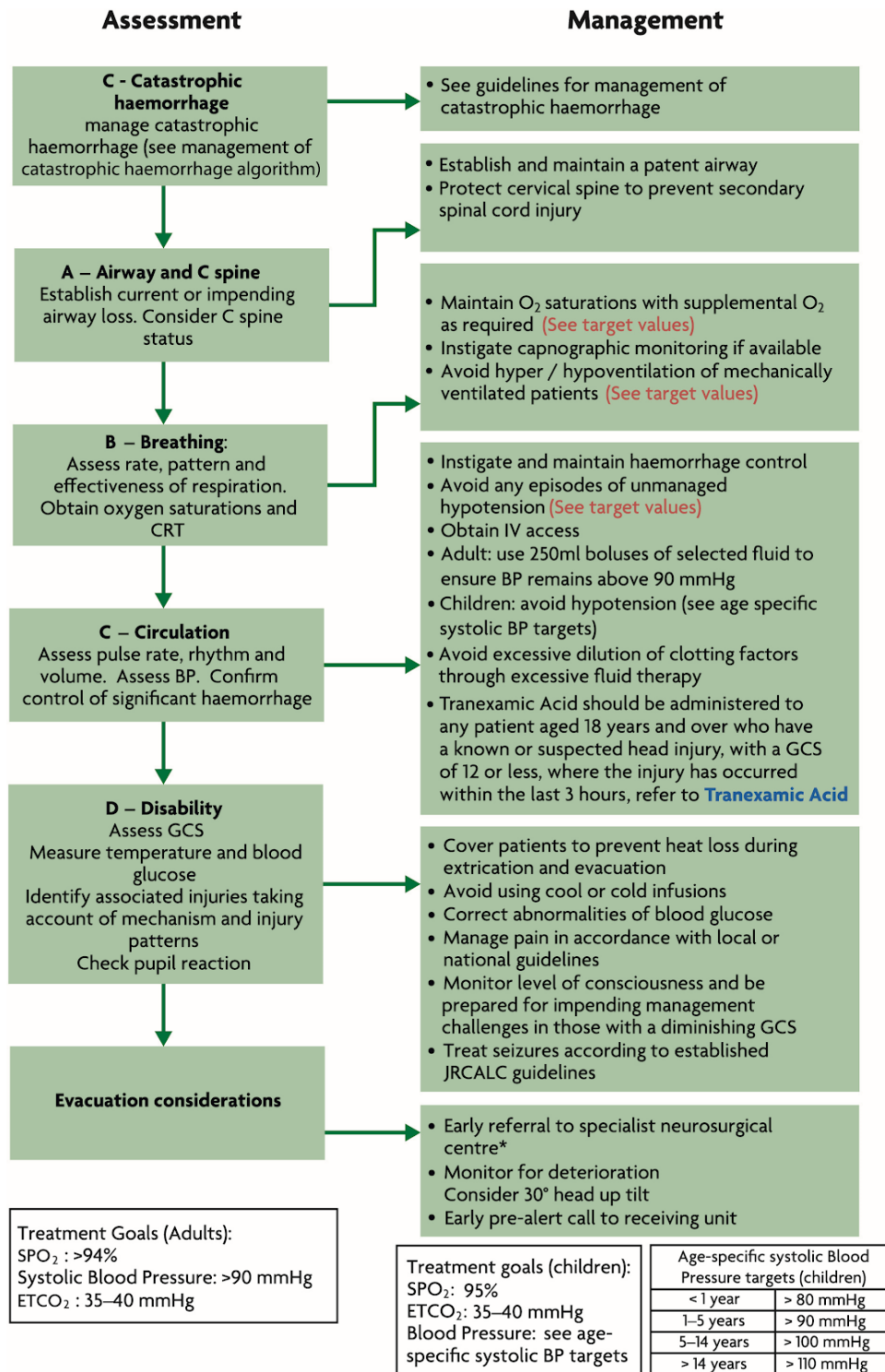
Head Injury

16th June 2020

CRASH 3 trial

Includes changes to **Tranexamic Acid**.

Following the results of the CRASH 3 trial, TXA should be administered to any patient aged 18 years and over who have a known or suspected head injury, with a GCS of 12 or less, where the injury has occurred within the last 3 hours.



Ibuprofen

29th September 2020

New contra-indication

A new contra-indication has been added to Ibuprofen: Do not offer non-steroidal anti-inflammatory drugs (NSAIDs) to frail or older adults with fractures.

Intravascular Fluid Therapy in Adults

29th September 2020

Diabetic ketoacidosis and other changes

Includes changes to **Glycaemic Emergencies in Adults and Children** and **Intravascular Fluid Therapy in Children**.

Wording regarding the administration of fluids to patients with DKA has been revised, along with guidance on pulse versus blood pressure as threshold for treatment. A new section of fluid administration and dosage for lump crush injuries and crush syndrome has also been introduced to the guideline.

Intravascular Fluid Therapy in Children

29th September 2020

Intravenous fluid therapy and diabetic ketoacidosis

Includes changes to **Glycaemic Emergencies in Adults and Children** and **Intravascular Fluid Therapy in Adults**.

Wording regarding the administration of fluids to patients with DKA has been revised, including removing the caution concerning children and young adults with DKA and the increased risk of cerebral oedema associated with IV fluid therapy. New references have been added to support these changes.

Medical Emergencies in Adults — Overview

29th September 2020

See changes for Altered Level of Consciousness.

Medical Emergencies in Children — Overview

29th September 2020

See changes for Altered Level of Consciousness.

Misoprostol

29th September 2020

Indications and contra-indications

Includes changes to **Syntometrine**.

The indications and contra-indications have been revised for clarity.

Morphine Sulfate

28th November 2019

Page for Age

The dosing regime for the IM route has been added to the Page for Age. The information has stayed the same but is now included on the Page for Age.

		milligrams			ml		milligrams
Morphine Sulphate	IM	1 milligram	1 milligram	60 minutes	10 milligrams in 1 ml	0.10 ml	2 milligrams
Meloxone IM	IM	400	400	2 minutes	400 micrograms in 1 ml		2 000

6th February 2020

Contra-indications and cautions

The contra-indication of severe headache is removed. A caution around headache is now added: 'Morphine may not be the appropriate treatment for a headache when the cause for the headache is uncertain, for example, a possible migraine'.

29th September 2020

Morphine Sulfate for the Management of Pain in Adults at End of Life

A link to **Morphine Sulfate for the Management of Pain in Adults at End of Life** has been added in the Indications section, to highlight that two separate monographs for morphine administration exist, for the different indications.

Naloxone

16th June 2020

Cardiac arrest in adults

A new dosage table is added to the Naloxone monograph to show administration for cardiac arrest for adults.

NLX	
Naloxone Hydrochloride	
Cardiac arrest, where opioid toxicity is considered to be the likely cause.	
Route: Intravenous/intraosseous	
In cardiac arrest, children or adults, repeat up to maximum dose until ROSC achieved.	
AGE	>12 years
INITIAL DOSE	400 micrograms
REPEAT DOSE	800 micrograms
DOSE INTERVAL	1 minute
CONCENTRATION	400 micrograms in 1 ml
VOLUME	1 ml
MAX DOSE	10,000 micrograms

Respiratory Illness in Children

29th September 2020

See changes for **Asthma in Adults and Children.**

Salbutamol

29th September 2020

See changes for **Asthma in Adults and Children.**

Syntometrine

6th February 2020

See changes for Misoprostol.

Tranexamic Acid

16th June 2020

See changes for Head Injury.

Trauma Emergencies in Adults — Overview

29th September 2020

Catastrophic haemorrhage and other changes

Includes changes to **Trauma Emergencies in Children – Overview**.

The section on AV fistula bleeds has been moved to the new **Vascular Emergencies** guideline.

The algorithm for the management of catastrophic haemorrhage (Figure 4.6) has been updated with regard to applying a tourniquet.

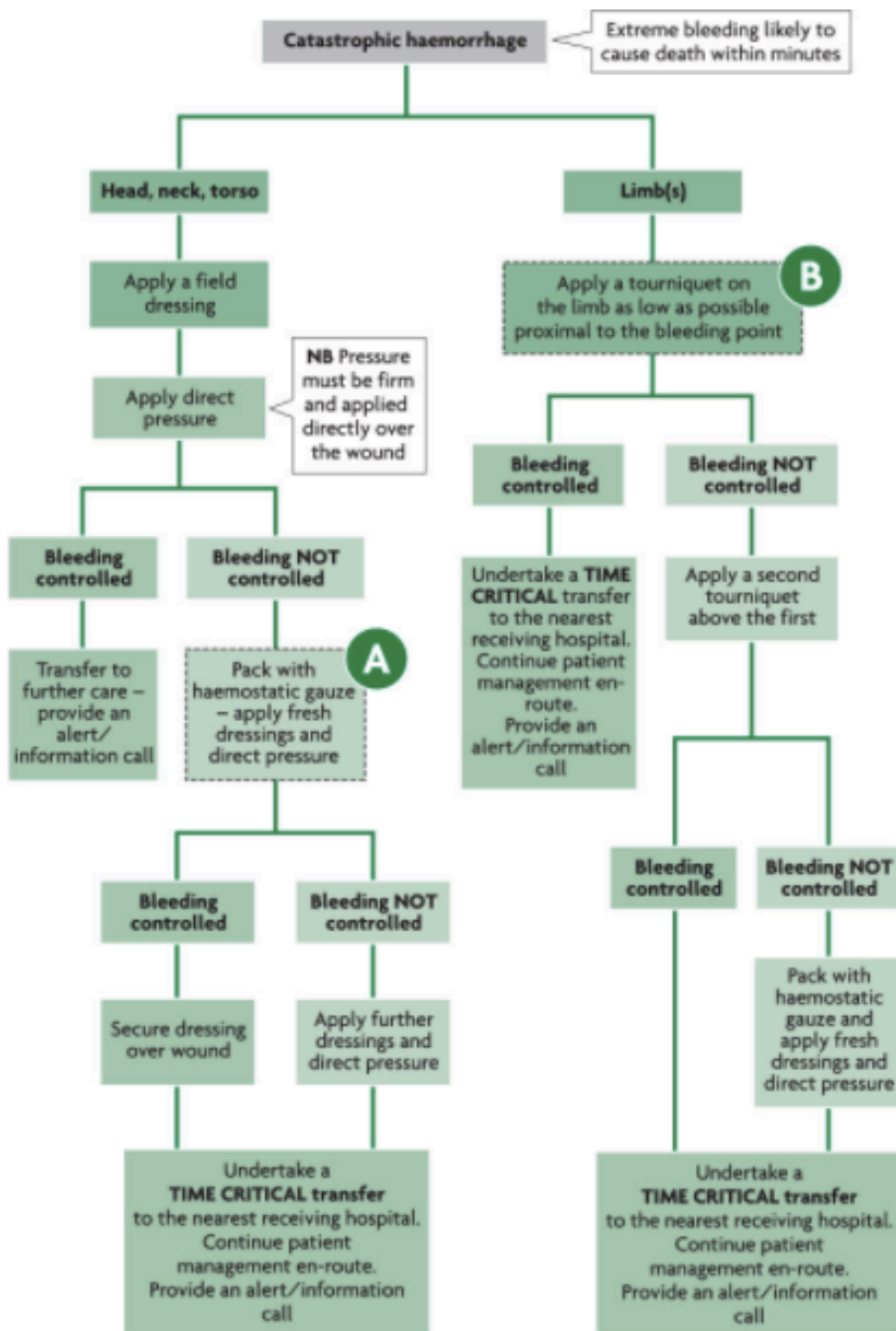
Trauma Emergencies in Children — Overview

29th September 2020

Catastrophic haemorrhage

Includes changes to **Trauma Emergencies in Adults – Overview**.

The algorithm for the management of catastrophic haemorrhage (Figure 4.6) has been updated with regard to applying a tourniquet.



NEW Vascular Emergencies

29th September 2020

New guideline

A new guideline on vascular emergencies has been published; this includes guidance on aortic aneurysm, aortic dissection, ischaemic limbs and diabetic foot problems, as well as guidance on AV fistula bleeds – this existing guidance has been moved from the **Trauma Emergencies in Adults – Overview** guideline.

